

# Slotted Combine Screens



Full  
Floors for: 9400, 9410  
9500, 9510  
9600, 9610

9650STS, 9750STS  
9660STS, 9760STS, 9860STS  
9670STS, 9770STS, 9870STS



Full Floors for Case IH  
combines including:  
7010, 7020, 8010 & 8020



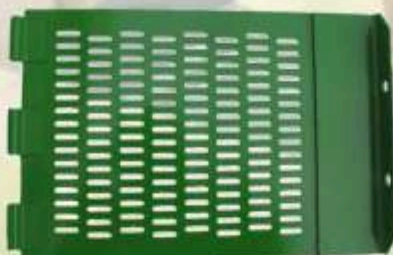
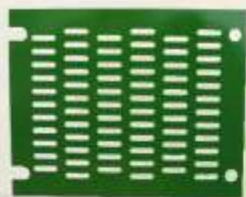
Floor kits  
available for all  
John Deere combines  
and other makes

- 10 gauge steel
- 3/16" x 7/8" slots
- 16" wide slotted area
- Angled slots ensure maximum removal of dirt
- Slotted screens do not plug with small stones or beans

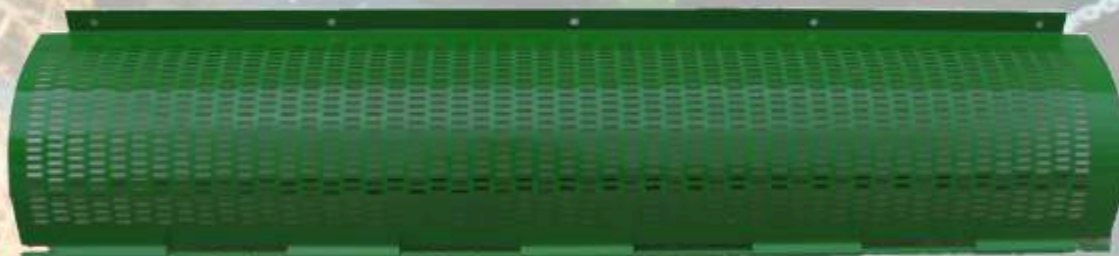


***NO TOOLS NEEDED!***  
Spring loaded pins hold  
doors in place over  
screened area for small  
seed crops

# Clean Grain and Return Elevator Doors



# Clean Grain Auger Floors



## SLOTTED STEEL SHEETS (Not Pictured)

14 gauge steel, 16" wide by 8' or 10' long with a one inch border are available. Slots run either straight or at an angle. This material is ideal for instalation in header floors. (5/32" x 3/4" slots)

*Due to continual progression, design and specifications subject to change.*

Manufactured by  
**JJEB**  
ENTERPRISES  
Box 7  
Horndean, MB  
Canada R0G 0Z0  
Phone: (204) 829-3324

Distributed by  
**EM**  
**ME**  
*Elmers*  
MANUFACTURING LTD.  
Box 908  
Altona, Manitoba  
Canada R0G 0B0  
Phone: (204) 324-6263  
Fax: (204) 324-6729  
Box 357  
Neche, North Dakota  
58265  
Web: [www.elmersmfg.mb.ca](http://www.elmersmfg.mb.ca)  
Email: [elmers@mts.net](mailto:elmers@mts.net)

DEALER STAMP